

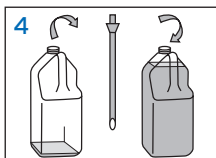
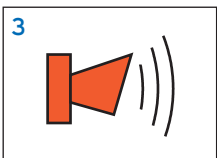
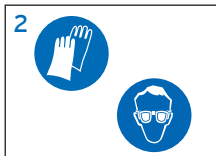


Clear Dry HD HIGHLY CONCENTRATED RINSE ADDITIVE FOR DIFFICULT WATER CONDITIONS

- **CLEAN** - Sparkling results especially in difficult water conditions. Reduces lime build-up in the rinse zone. In combination with Ecolab ware washing detergents the most hygienic, sparkling clean results are guaranteed.
- **SAFE** - An optimum wetting surfactant system ensures fast drying of tableware leaving no moisture to minimize the risk of bacterial growth. The plastic pack is easy to recycle, thus protecting our environment.
- **EFFICIENT** - Specially developed de-foaming formulation increases the dish washing mechanical action and machine efficiency. The highly concentrated formula allows the convenient 5l packaging format and saves storage space.



USE INSTRUCTIONS



FOR USE WITH ECOLAB DOSING UNIT

Your Ecolab specialist will adjust the dosing system for your specific cleaning needs.

- 1 Check hygiene plan, product label for detailed use information
- 2 Wear suitable protective clothing when handling the product
- 3 If the alarm sounds, stop the machine
- 4 Carefully take out the suction pipe. Unscrew closure from the new jug, insert the suction pipe and place the jug back in the jug holder

If "empty product" warning device is not installed, check rinse additive level daily and change bottles when necessary.

SPECIAL NOTES/INFORMATION

For professional use only

For use with Ecolab dosing units. Clear Dry HD is not suitable for tableware made from polycarbonate or copper!

SAFETY INFORMATION

Do not mix with any other products!

For further information and safety instructions, see product label and safety data sheet

Safety Data Sheet for professional users available on request

STORAGE CONDITIONS

Store below 40°C in original closed container only

PACK SIZE

2 x 5 L	10 kg	200 kg
2 x 2 L	20 kg	